



**Matt Daly**

(386) 340-7933



## **THE ARDEN at PLANTATION BAY**

THE ARDEN - SPANISH

**4 Bedrooms • 3 Bathrooms • 3-Car Garage • 2,469 ft<sup>2</sup> Living Area • 3,342 ft<sup>2</sup> Under Roof**

Step into the Arden floor plan, where open, airy spaces invite relaxation and connection. The heart of the home is the deluxe kitchen, seamlessly connected to the dining room and living area—ideal for family dinners or lively gatherings. A covered lanai expands your living space outdoors, perfect for morning coffee or evening sunsets. The master suite is a serene retreat with a spacious bathroom and large walk-in closet, while three additional bedrooms offer flexibility for family, guests, or an office. The three-car garage and dedicated laundry room add practicality to everyday life. With ICI Homes' customization options, the Arden can adapt to fit your lifestyle. Imagine a home office, expanded pantry, or even reimagined spaces to suit your needs. At ICI Homes, we're dedicated to designing spaces that go beyond the ordinary, building a home that's as unique as you are.

**Matt Daly**

Life Real Estate - 3959

(386) 340-7933

MATTDALYSELLS@GMAIL.COM

\* Renderings may vary from actual home. Please see disclaimer for more details.

# THE ARDEN

4 Bedrooms • 3 Bathrooms • 3-Car Garage

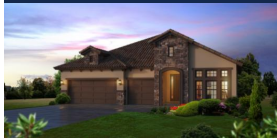
**Plantation Bay** Available In  
Ormond Beach, FL Westlake 60

**Living Area:** 2,469 ft<sup>2</sup> **Under Roof:** 3,342 ft<sup>2</sup>

## THE MEDITERRANEAN



## THE TUSCAN



## THE FARMHOUSE



## THE VERNACULAR



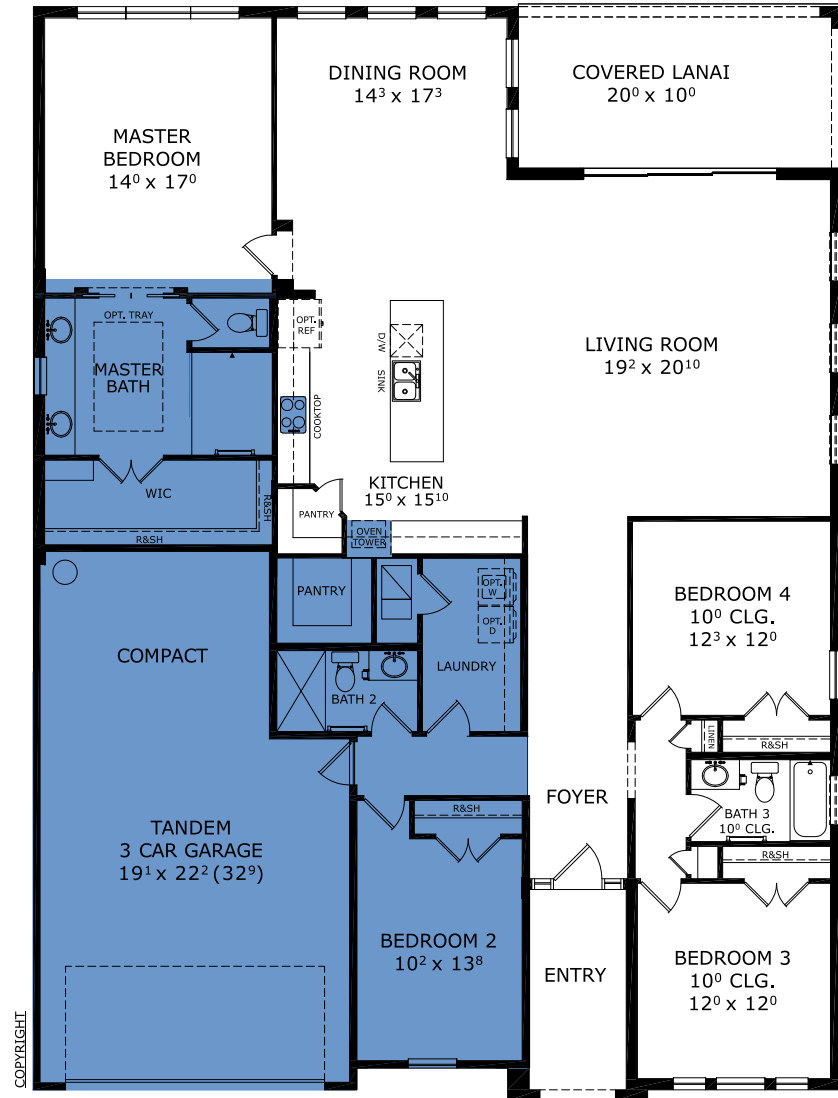
## THE CRAFTSMAN



## THE FARMHOUSE MODERN



## FIRST FLOOR



COPYRIGHT



©1994-2026 ICI Homes™ is a registered trademark whose divisions operate under CBC1267313, CBC1262114, CBC1262120, CBC1264300, CBC1265743, CRC1333091, and CBC1257263. Features may be plan specific and vary. Please consult a Sales Associate for specific feature information. All new ICI Homes come with a HBW 2-10 warranty. Certain elevations may have additional fees. Prices may not include lot premiums, upgrades, and options. Inventory home completion date may vary. All prices subject to change without notice. All plans are property of ICI Homes and cannot be copied or used without permission. Prices, promotions, incentives, features, options, amenities, floor plans, elevations, site maps, designs, materials, and dimensions are for illustrative purposes only and subject to change without notice. Plans should not be relied upon as representation express or implied of final sizes, locations, features or dimensions. Square footage and dimensions are estimated and may vary from description. All HERS ratings and savings are calculated by a third party energy rating service. Actual savings will depend on a number of factors, including but not limited to daily activities, home maintenance practices, household size, use of appliances, lighting and internal climate control systems, lot orientation, and surrounding climate and weather conditions. Created on 04/28/2026: \_\_\_\_\_ Garage Orientation R / L: \_\_\_\_\_