



Matt Daly
(386) 340-7933



THE AVA at VOLUSIA/FLAGLER OFFSITE

THE AVA - MEDITERRANEAN

3 Bedrooms • 3 Bathrooms • 2-Car Garage • 3,045 ft² Living Area • 3,960 ft² Under Roof

The Ava is a 3-bedroom, 3-bathroom home that seamlessly combines luxury and functionality in 3,045 square feet. Enter through a grand foyer to a spacious living room, dining area, and gourmet kitchen featuring ICI's Kitchen Deluxe upgrade. A covered lanai invites outdoor living, with options for a summer kitchen. The private master suite boasts a spa-like bath and extended walk-in closet. With a study, game room, and two additional bedrooms, there's room for everyone. At ICI Homes, customization is key – let us tailor the Ava to make it truly yours.

Matt Daly

Life Real Estate - 3959

(386) 340-7933

MATTDALYSELLS@GMAIL.COM

* Renderings may vary from actual home. Please see disclaimer for more details.

THE AVA

3 Bedrooms • 3 Bathrooms • 2-Car Garage

Volusia/Flagler

Offsite

Ormond Beach, FL

Available In

Volusia Flagler On Your Lot

Living Area: 3,045 ft² Under Roof: 3,960 ft²

THE TUSCAN



THE WEST INDIES



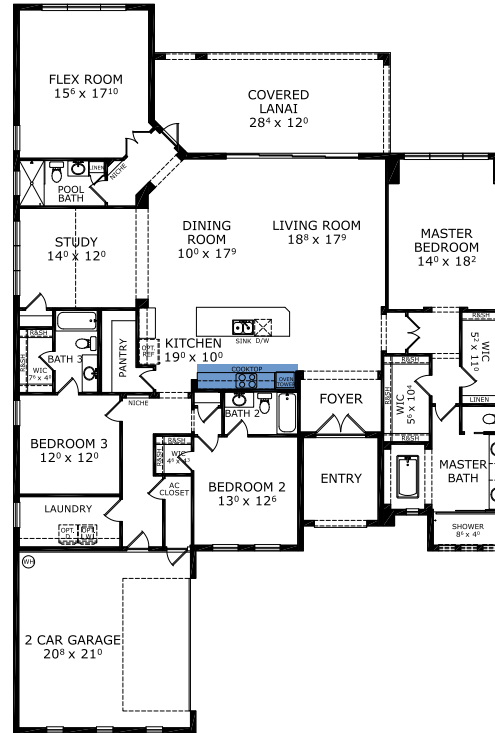
THE COASTAL



THE FARMHOUSE



FIRST FLOOR



©1994-2026 ICI Homes™ is a registered trademark whose divisions operate under CBC1267313, CBC1262114, CBC1262120, CBC1264300, CBC1265743, CRC1333091, and CBC1257263. Features may be plan specific and vary. Please consult a Sales Associate for specific feature information. All new ICI Homes come with a HBW 2-10 warranty. Certain elevations may have additional fees. Prices may not include lot premiums, upgrades, and options. Inventory home completion date may vary. All prices subject to change without notice. All plans are property of ICI Homes and cannot be copied or used without permission. Prices, promotions, incentives, features, options, amenities, floor plans, elevations, site maps, designs, materials, and dimensions are for illustrative purposes only and subject to change without notice. Plans should not be relied upon as representation express or implied of final sizes, locations, features or dimensions. Square footage and dimensions are estimated and may vary from description. All HERS ratings and savings are calculated by a third party energy rating service. Actual savings will depend on a number of factors, including but not limited to daily activities, home maintenance practices, household size, use of appliances, lighting and internal climate control systems, lot orientation, and surrounding climate and weather conditions. Created on 04/28/2026: _____ Garage Orientation R / L: _____

