



Matt Daly

(386) 340-7933



THE BILTMORE at CONNERTON

THE BILTMORE - BILTMORE - COUNTRY FRENCH MANOR

3 Bedrooms • 3 Bathrooms • 2-Car Garage • 3,195 ft² Living Area • 4,405 ft² Under Roof

The Biltmore is a stunning 3,195 sq ft home designed for both elegance and functionality. With 3 bedrooms, 3 baths, and a grand open floor plan, this layout is perfect for entertaining and relaxed family living. The luxurious master suite offers a serene retreat with dual walk-in closets and a spa-inspired bath. Flexible spaces like the study, morning room, and covered lanai add versatility, while options for a golf cart garage or deluxe kitchen allow for complete customization. Crafted by ICI Homes, the Biltmore invites you to create a space that truly reflects your lifestyle.

Matt Daly

Life Real Estate - 3959

(386) 340-7933

MATTDALYSELLS@GMAIL.COM

* Renderings may vary from actual home. Please see disclaimer for more details.

THE BILTMORE

3 Bedrooms • 3 Bathrooms • 2-Car Garage

Connerton
Land O' Lakes, FL

Available In
Connerton

Living Area: 3,195 ft² **Under Roof:** 4,405 ft²

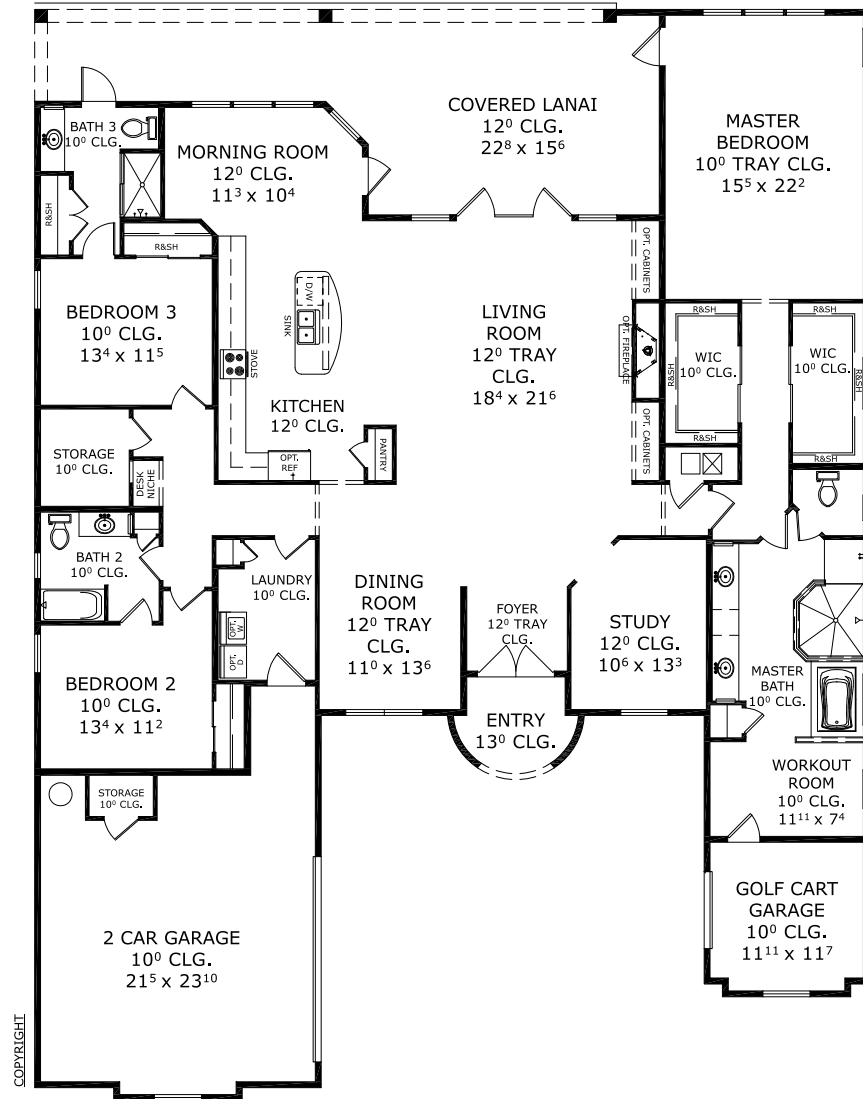
THE SPANISH



THE MEDITERRANEAN



FIRST FLOOR



©1994-2026 ICI Homes™ is a registered trademark whose divisions operate under CBC1267313, CBC1262114, CBC1262120, CBC1264300, CBC1265743, CRC1333091, and CBC1257263. Features may be plan specific and vary. Please consult a Sales Associate for specific feature information. All new ICI Homes come with a HBW 2-10 warranty. Certain elevations may have additional fees. Prices may not include lot premiums, upgrades, and options. Inventory home completion date may vary. All prices subject to change without notice. All plans are property of ICI Homes and cannot be copied or used without permission. Prices, promotions, incentives, features, options, amenities, floor plans, elevations, site maps, designs, materials, and dimensions are for illustrative purposes only and subject to change without notice. Plans should not be relied upon as representation express or implied of final sizes, locations, features or dimensions. Square footage and dimensions are estimated and may vary from description. All HERS ratings and savings are calculated by a third party energy rating service. Actual savings will depend on a number of factors, including but not limited to daily activities, home maintenance practices, household size, use of appliances, lighting and internal climate control systems, lot orientation, and surrounding climate and weather conditions. Created on 04/28/2026: _____ Garage Orientation R / L: _____

