



Matt Daly
(386) 340-7933



THE BROOKLYN at WELLEN PARK

THE BROOKLYN - COASTAL

4 Bedrooms • 3.5 Bathrooms • 3-Car Garage • 3,234 ft² Living Area • 4,227 ft² Under Roof

Step into the Brooklyn, a versatile home with over 3,000 sqft of living space designed to bring comfort, style, and functionality to everyday living. This stunning two-story layout offers 4 bedrooms, 3 and a half bathrooms, and a three-car garage, making it ideal for families who need space and flexibility. With open-concept living areas, private retreats, and plenty of room for entertaining, the Brooklyn can easily adapt to your lifestyle. ICI Homes' commitment to customization means you can personalize the Brooklyn to truly make it your own.

Matt Daly

Life Real Estate - 3959

(386) 340-7933

MATTDALYSELLS@GMAIL.COM

* Renderings may vary from actual home. Please see disclaimer for more details.

THE BROOKLYN

4 Bedrooms • 3.5 Bathrooms • 3-Car Garage

Wellen Park
Venice, FL

Available In
Wellen Park 60

Living Area: 3,234 ft² **Under Roof:** 4,227 ft²

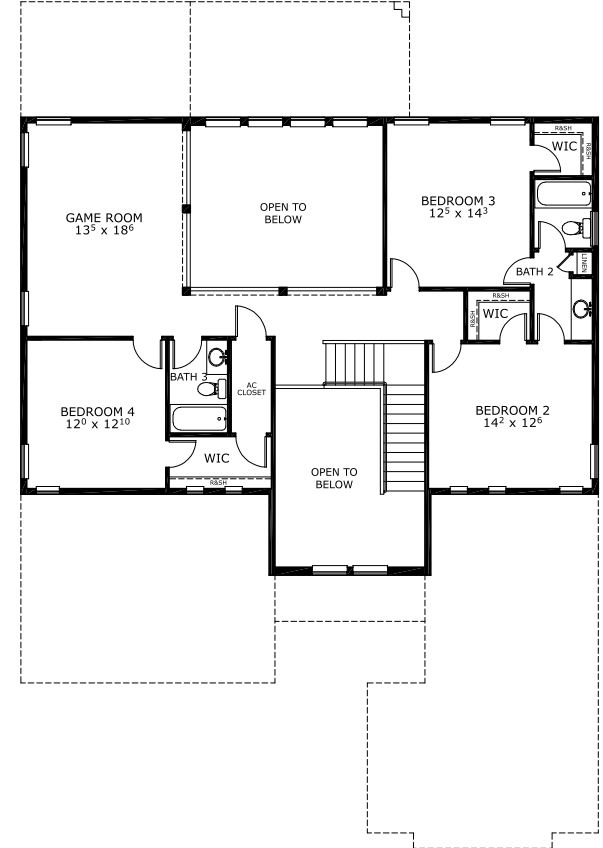
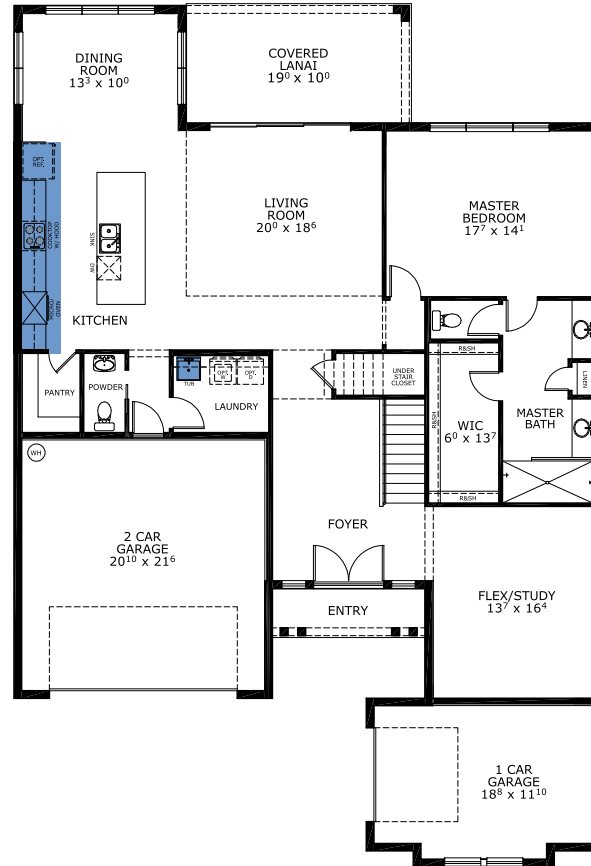
THE WEST INDIES



THE FARMHOUSE



FIRST-SECOND FLOOR



©1994-2026 ICI Homes™ is a registered trademark whose divisions operate under CBC1267313, CBC1262114, CBC1262120, CBC1264300, CBC1265743, CRC1333091, and CBC1257263. Features may be plan specific and vary. Please consult a Sales Associate for specific feature information. All new ICI Homes come with a HBW 2-10 warranty. Certain elevations may have additional fees. Prices may not include lot premiums, upgrades, and options. Inventory home completion date may vary. All prices subject to change without notice. All plans are property of ICI Homes and cannot be copied or used without permission. Prices, promotions, incentives, features, options, amenities, floor plans, elevations, site maps, designs, materials, and dimensions are for illustrative purposes only and subject to change without notice. Plans should not be relied upon as representation express or implied of final sizes, locations, features or dimensions. Square footage and dimensions are estimated and may vary from description. All HERS ratings and savings are calculated by a third party energy rating service. Actual savings will depend on a number of factors, including but not limited to daily activities, home maintenance practices, household size, use of appliances, lighting and internal climate control systems, lot orientation, and surrounding climate and weather conditions. **Created on 04/28/2026:** _____ **Garage Orientation R / L:** _____

