



Matt Daly

(386) 340-7933



THE GULF - G at NOCATEE

THE GULF - WEST INDIES

3 Bedrooms • 2.5 Bathrooms • 2-Car Garage • 1,635 ft² Living Area • 2,229 ft² Under Roof

The Gulf is a 1,635-square-foot, three-bedroom, two and a half bath home with a smart, efficient layout. The main level includes two bedrooms and a flexible retreat area, perfect for a home office or playroom. Upstairs, an open-concept kitchen, dining, and living area flows onto a covered balcony, ideal for relaxation. The master suite, also on this level, offers a walk-in closet and an en-suite bath with dual vanities. With ICI Homes' customization options, you can tailor the Gulf to suit your style and needs, creating a home that's uniquely yours.

Matt Daly

Life Real Estate - 3959

(386) 340-7933

MATTDALYSELLS@GMAIL.COM

* Renderings may vary from actual home. Please see disclaimer for more details.

THE GULF - G

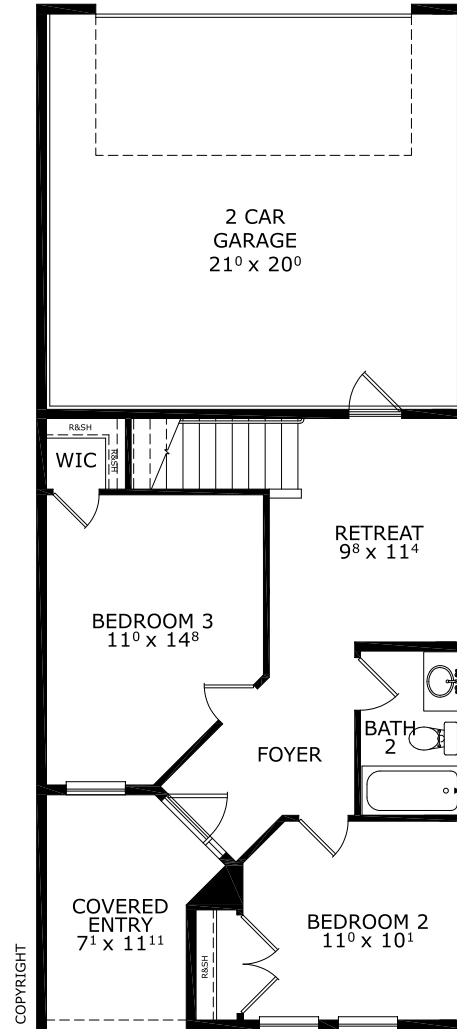
3 Bedrooms • 2.5 Bathrooms • 2-Car Garage

Nocatee
Ponte Vedra, FL

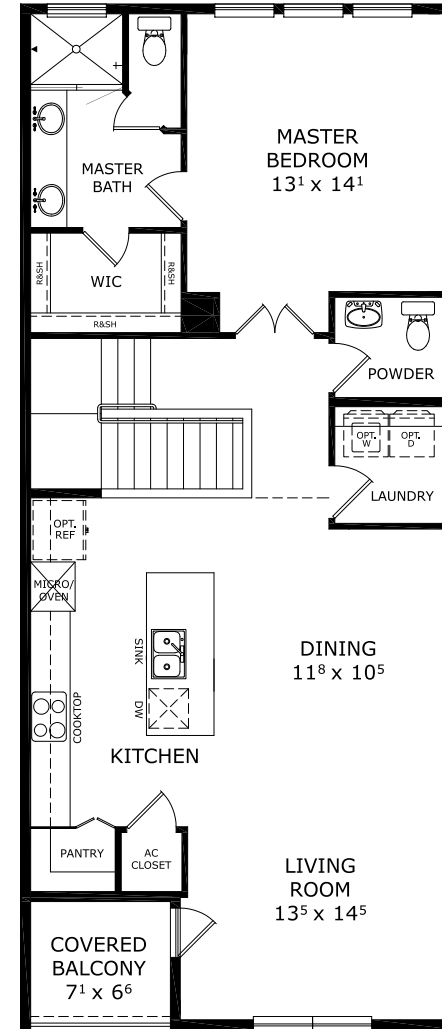
Available In
West End Townhomes

Living Area: 1,635 ft² **Under Roof:** 2,229 ft²

THE FARMHOUSE



FIRST-SECOND FLOOR



©1994-2026 ICI Homes™ is a registered trademark whose divisions operate under CBC1267313, CBC1262114, CBC1262120, CBC1264300, CBC1265743, CRC1333091, and CBC1257263. Features may be plan specific and vary. Please consult a Sales Associate for specific feature information. All new ICI Homes come with a HBW 2-10 warranty. Certain elevations may have additional fees. Prices may not include lot premiums, upgrades, and options. Inventory home completion date may vary. All prices subject to change without notice. All plans are property of ICI Homes and cannot be copied or used without permission. Prices, promotions, incentives, features, options, amenities, floor plans, elevations, site maps, designs, materials, and dimensions are for illustrative purposes only and subject to change without notice. Plans should not be relied upon as representation express or implied of final sizes, locations, features or dimensions. Square footage and dimensions are estimated and may vary from description. All HERS ratings and savings are calculated by a third party energy rating service. Actual savings will depend on a number of factors, including but not limited to daily activities, home maintenance practices, household size, use of appliances, lighting and internal climate control systems, lot orientation, and surrounding climate and weather conditions. Created on 04/28/2026: _____ Garage Orientation R / L: _____

