



Matt Daly
(386) 340-7933



THE JULIETTE II at WOODHAVEN

THE JULIETTE II - MEDITERRANEAN

4 Bedrooms • 3 Bathrooms • 2-Car Garage • 2,301 ft² Living Area • 3,078 ft² Under Roof

The Juliette II offers 2,301 square feet of beautifully designed space with four bedrooms and three baths in a single-story layout. The open-concept living room flows into a deluxe kitchen and dining area, ideal for gatherings. The private master suite features dual vanities, a walk-in shower, and a cozy window seat in the bedroom. Two bedrooms share a bath, while a fourth bedroom with an en-suite bath is perfect for guests. Enjoy outdoor living on the extended lanai. With ICI Homes' custom options, you can personalize the Juliette II to suit your unique style and needs.

Matt Daly

Life Real Estate - 3959

(386) 340-7933

MATTDALYSELLS@GMAIL.COM

* Renderings may vary from actual home. Please see disclaimer for more details.

THE JULIETTE II

4 Bedrooms • 3 Bathrooms • 2-Car Garage

Woodhaven
Port Orange, FL

Available In
Woodhaven 60

Living Area: 2,301 ft² Under Roof: 3,078 ft²

THE WEST INDIES



THE COASTAL



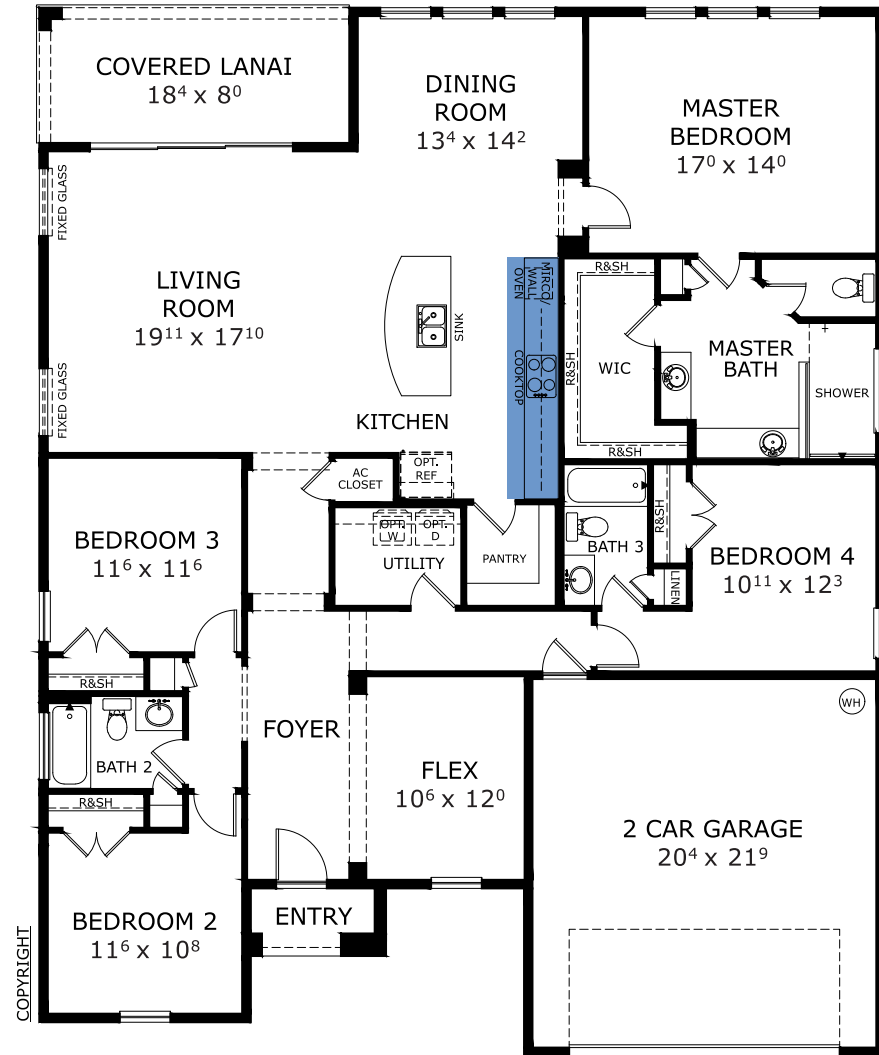
THE TUSCAN



THE CRAFTSMAN



FIRST FLOOR



COPYRIGHT

©1994-2026 ICI Homes™ is a registered trademark whose divisions operate under CBC1267313, CBC1262114, CBC1262120, CBC1264300, CBC1265743, CRC1333091, and CBC1257263. Features may be plan specific and vary. Please consult a Sales Associate for specific feature information. All new ICI Homes come with a HBW 2-10 warranty. Certain elevations may have additional fees. Prices may not include lot premiums, upgrades, and options. Inventory home completion date may vary. All prices subject to change without notice. All plans are property of ICI Homes and cannot be copied or used without permission. Prices, promotions, incentives, features, options, amenities, floor plans, elevations, site maps, designs, materials, and dimensions are for illustrative purposes only and subject to change without notice. Plans should not be relied upon as representation express or implied of final sizes, locations, features or dimensions. Square footage and dimensions are estimated and may vary from description. All HERS ratings and savings are calculated by a third party energy rating service. Actual savings will depend on a number of factors, including but not limited to daily activities, home maintenance practices, household size, use of appliances, lighting and internal climate control systems, lot orientation, and surrounding climate and weather conditions. Created on 04/28/2026: _____ Garage Orientation R / L: _____

